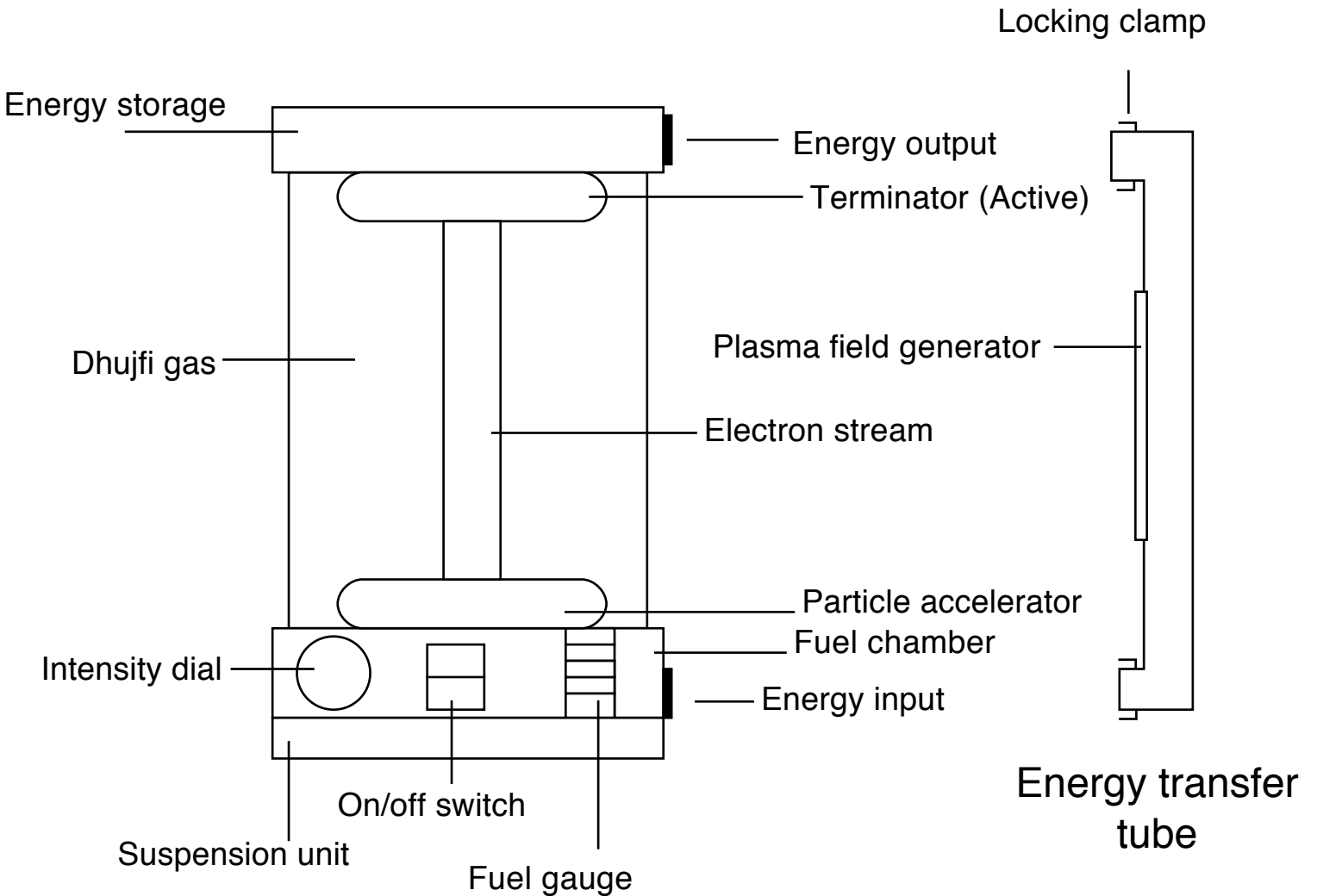


Imperial glow-tube



To light up specific areas, the Empire uses glow-tubes. The intensity dial controls the amount of electrons going through the particle accelerator, thus changing the amount of light emitted. The on/off switch turns the particle accelerator on or off. The fuel gauge shows how much fuel is left in the fuel chamber. An active terminator stores the energy in the top section. A passive terminator just dissipates the energy. There is a special tube one can buy to bring the energy from the energy storage back to the fuel chamber. To prevent the transferring energy from dissipating, the transfer tube uses a small plasma field generator. The electron stream 'excites' the duhjfi and makes it let off light and heat.